

NSP-SPRING-PACK product line "STANDARD"

for external filling via hose connection,
hose pipe, control instrument and compentor reserv oir.

- full spring load at start position of piston stroke
- load adjustable by user
- constant load all over service life
- bunched load on minimum space
- solid construction, long service life

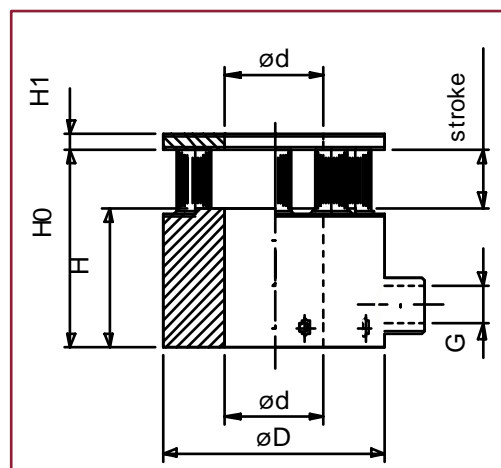
Standard delivery pack without pressure disk type DS
if required, please order separately.
Fill with gas only when installed!

Compentor reserv oir can be delivered on demand!

- (1) max. adm. working pressure 150 bar!
- (2) other threaded connections possible!

Subject to dimensional changes! Further dimensions on demand!

[\(Installation, mounting and safety advices site 5\)](#)



D	d	stroke S	H0	H	H1	G(2)	F1 (N) 50bar	F2(N) 100bar	F3(N) 150bar (1)	type article-No.
47	12	10	58	48	4	G1/8"	3980	7960	11940	S 04701210-6-13
		15	68	53	S 04701215-6-13					
		20	78	58	S 04701220-6-13					
		30	98	68	S 04701230-6-13					
50	15	10	58	48	4	G1/8"	3980	7960	11940	S 05001510-6-13
		15	68	53	S 05001515-6-13					
		20	78	58	S 05001520-6-13					
		30	98	68	S 05001530-6-13					
52	17	10	58	48	4	G1/8"	3980	7960	11940	S 05201710-6-13
		15	68	53	S 05201715-6-13					
		20	78	58	S 05201720-6-13					
		30	98	68	S 05201730-6-13					
55	20	10	58	48	4	G1/8"	3980	7960	11940	S 05502010-6-13
		15	68	53	S 05502015-6-13					
		20	78	58	S 05502020-6-13					
		30	98	68	S 05502030-6-13					
60	20	10	58	48	4	G1/8"	4952	9904	14856	S 06002010-6-14
		15	68	53	S 06002015-6-14					
		20	78	58	S 06002020-6-14					
		30	98	68	S 06002030-6-14					
60	25	10	58	48	4	G1/8"	5064	10128	15920	S 06002510-8-13
		15	68	53	S 06002515-8-13					
		20	78	58	S 06002520-8-13					
		30	98	68	S 06002530-8-13					
65	30	10	58	48	4	G1/8"	5064	10128	15192	S 06503010-8-13
		15	68	53	S 06503015-8-13					
		20	78	58	S 06503020-8-13					
		30	98	68	S 06503030-8-13					

NSP-SPRING-PACK product line "STANDARD"

D	d	stroke S	H0	H	H1	G(2)	F1 (N) 50bar	F2(N) 100bar	F3(N) 150bar (1)	type article-No.
70	25	10	58	48	5	G1/8"	6092	12058	18086	S 07002510-6-13
		20	78	58						S 07002515-6-13
		30	98	68						S 07002520-8-13
		40	118	78						S 07002530-8-13
		50	138	88						S 07002530-8-13
70	30	10	58	48	4	G1/8"	6602	13204	19806	S 07003010-8-14
		15	68	53						S 07003015-8-14
		20	78	58						S 07003020-8-14
		30	98	68						S 07003030-8-14
70	35	10	58	48	4	G1/8"	6633	13266	19899	S 07003510-10-13
		15	68	53						S 07003515-10-13
		20	78	58						S 07003520-10-13
		30	98	68						S 07003530-10-13
75	40	10	58	48	4	G1/8"	6633	13266	19899	S 07504010-10-13
		15	68	53						S 07504015-10-13
		20	78	58						S 07504020-10-13
		30	98	68						S 07504030-10-13
80	30	10	63	53	5	G1/4"	7630	15260	22890	S 08003010-6-18
		20	83	63						S 08003020-6-18
		30	103	73						S 08003030-6-18
		40	123	83						S 08003040-6-18
		50	143	93						S 08003050-6-18
		60	163	103						S 08003060-6-18
		70	183	113						S 08003070-6-18
80	35	15	68	53	5	JNF1/2"-2l	8038	16077	24115	S 08003515-8-16
		20	78	58						S 08003520-8-16
		30	98	68						S 08003530-8-16
		40	118	78						S 08003540-8-16
		50	138	88						S 08003550-8-16
80	40	10	58	48	4	G1/4"	8252	16504	24756	S 08004010-10-14
		15	68	53						S 08004015-10-14
		20	78	58						S 08004020-10-14
		30	98	68						S 08004030-10-14
80	45	10	58	48	4	G1/4"	7960	15920	23880	S 08004510-12-13
		15	68	53						S 08004515-12-13
		20	78	58						S 08004520-12-13
		30	98	68						S 08004530-12-13
90	40	10	63	53	5	G1/4"	10174	20347	30521	S 09004010-8-18
		20	83	63						S 09004020-8-18
		30	103	73						S 09004030-8-18
		40	123	83						S 09004040-8-18
		50	143	93						S 09004050-8-18
		60	163	103						S 09004060-8-18
		70	183	113						S 09004070-8-18

NSP-SRING-PACK product line "STANDARD"

D	d	stroke S	H0	H	H1	G(2)	F1 (N) 50bar	F2(N) 100bar	F3(N) 150bar (1)	type article-No.
90	45	10	58	48	5	G1/4"	100487	20096	30144	S 09004510-10-16
		20	78	58						S 09004520-10-16
		30	98	68						S 09004530-10-16
		40	118	78						S 09004540-10-16
		50	138	88						S 09004550-10-16
100	40	10	68	58	5	G1/4"	11398	22796	34195	S 10004010-6-22
		20	88	68						S 10004020-6-22
		30	108	78						S 10004030-6-22
		40	128	88						S 10004040-6-22
		50	148	98						S 10004050-6-22
		60	168	108						S 10004060-6-22
		70	188	118						S 10004070-6-22
100	45	10	63	53	5	JNF1/2"-2(15260	25120	37680	S 10004510-8-20
		20	83	63						S 10004520-8-20
		30	103	73						S 10004530-8-20
		40	123	83						S 10004540-8-20
		50	143	93						S 10004550-8-20
		60	163	103						S 10004560-8-20
		70	183	113						S 10004570-8-20
100	50	10	63	53	5	G1/4"	10174	25434	38151	S 10005010-10-18
		20	83	63						S 10005020-10-18
		30	103	73						S 10005030-10-18
		40	123	83						S 10005040-10-18
		50	143	93						S 10005050-10-18
		60	163	103						S 10005060-10-18
		70	183	113						S 10005070-10-18
105	65	10	58	48	4	G1/4"	9903	19806	29709	S 10506510-12-14
		15	68	53						S 10506515-12-14
		20	78	58						S 10506520-12-14
		30	98	68						S 10506530-12-14
		40	118	78						S 10506540-12-14
112	57	10	63	53	5	G1/4"	15700	31400	47100	S 11205710-10-20
		20	83	63						S 11205720-10-20
		30	103	73						S 11205730-10-20
		40	123	83						S 11205740-10-20
		50	143	93						S 11205750-10-20
		60	163	103						S 11205760-10-20
		70	183	113						S 11205770-10-20
120	65	10	63	53	5	G1/4"	15700	31400	47100	S 12006510-10-20
		20	83	63						S 12006520-10-20
		30	103	73						S 12006530-10-20
		40	123	83						S 12006540-10-20
		50	143	93						S 12006550-10-20
		60	163	103						S 12006560-10-20
		70	183	113						S 12006570-10-20

NSP-SRING-PACK product line "STANDARD"

D	d	stroke S	H0	H	H1	G(2)	F1 (N) 50bar	F2(N) 100bar	F3(N) 150bar (1)	type article-No.
125	60	10	73	63	6	JNF1/2"-2l	19625	39250	58875	S 12506010-8-25
		20	93	73						S 12506020-8-25
		30	113	83						S 12506030-8-25
		40	133	93						S 12506040-8-25
		50	153	103						S 12506050-8-25
		60	173	113						S 12506060-8-25
		70	193	123						S 12506070-8-25
125	65	10	68	58	5	G1/4"	15198	30395	45593	S 12506510-8-22
		20	88	68						S 12506520-8-22
		30	108	78						S 12506530-8-22
		40	128	88						S 12506540-8-22
		50	148	98						S 12506550-8-22
		60	168	108						S 12506560-8-22
		70	188	118						S 12506570-8-22
125	70	10	63	53	5	G1/4"	15700	37680	56520	S 12507010-12-20
		20	83	63						S 12507020-12-20
		30	103	73						S 12507030-12-20
		40	123	83						S 12507040-12-20
		50	143	93						S 12507050-12-20
		60	163	103						S 12507060-12-20
		70	183	113						S 12507070-12-20
140	70	10	73	63	6	G3/8"	24531	49062	73593	S 14007010-10-25
		20	93	73						S 14007020-10-25
		30	113	83						S 14007030-10-25
		40	133	93						S 14007040-10-25
		50	153	103						S 14007050-10-25
		60	173	113						S 14007060-10-25
		70	193	123						S 14007070-10-25
140	80	10	68	58	5	G3/8"	18997	37994	56991	S 14008010-10-22
		20	88	68						S 14008020-10-22
		30	108	78						S 14008030-10-22
		40	128	88						S 14008040-10-22
		50	148	98						S 14008050-10-22
		60	168	108						S 14008060-10-22
		70	188	118						S 14008070-10-22
150	80	10	73	63	6	G3/8"	29437	58874	88312	S 15008010-12-25
		20	93	73						S 15008020-12-25
		30	113	83						S 15008030-12-25
		40	133	93						S 15008040-12-25
		50	153	103						S 15008050-12-25
		60	173	113						S 15008060-12-25
		70	193	123						S 15008070-12-25

NSP-SPRING-PACK product line "STANDARD"

D	d	stroke S	H0	H	H1	G(2)	F1 (N) 50bar	F2(N) 100bar	F3(N) 150bar (1)	type article-No.
160	90	10	73	63	6	G3/8"	29437	58874	88312	S 16009010-12-25
		20	93	73						S 16009020-12-25
		30	113	83						S 16009030-12-25
		40	133	93						S 16009040-12-25
		50	153	103						S 16009050-12-25
		60	173	113						S 16009060-12-25
		70	193	123						S 16009070-12-25
180	110	10	73	63	5	G3/8"	34343	68686	103030	S 18011010-14-25
		20	93	73						S 18011020-14-25
		30	113	83						S 18011030-14-25
		40	133	93						S 18011040-14-25
		50	153	103						S 18011050-14-25
		60	173	113						S 18011060-14-25
		70	193	123						S 18011070-14-25

Installation

If NSP-SPRING-PACKS are imbedded in a tool pallet, it is absolutely necessary to make a drainage bore in order to allow lubricants and cooling fluid to drain off – please take care that the bore hole is large enough for the fluid used.

In case of stroke travel exceeding 20 mm and moving speed exceeding 0.2 m/sec., NSP-SPRING-PACKS have to be installed with preload. Preload should be at least 1 mm.

Spring with a filling pressure of 150 bar and more must always be installed with preload!

Never load NSP-springs to solid length!

A resisting stroke of at least 1 mm must also be provided. Never exceed the filling pressure indicated in the catalogue! For filling, only use the original OEST-feeding-adapter.

Maintenance and cleaning

For cleaning the gas springs, please use only a clean polishing cloth! If necessary, damp the polishing cloth with detergent. Never spray detergent or solvent onto the gas spring or dip it into them.

Safe use

Gas springs are components provided with pressure (AUTONOMIC) or which have to be provided with pressure after installation and mounting (STANDARD). When working on a system or on the spring itself, first of all remove pressure! Dismounting or reparational work must only be done by specialists instructed by the manufacturer or by the manufacturer himself! Before initiation, carefully read the safety advices and make the operating staff familiar with the safe use.